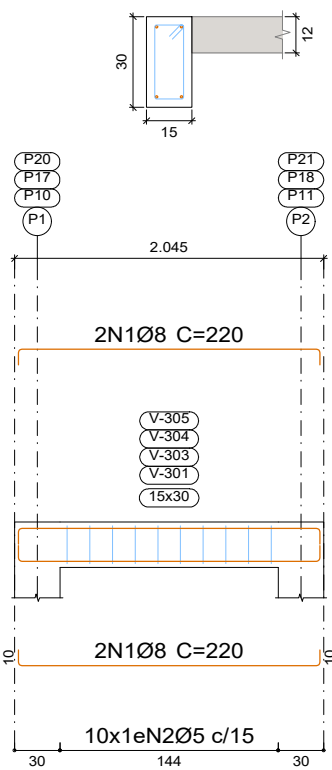
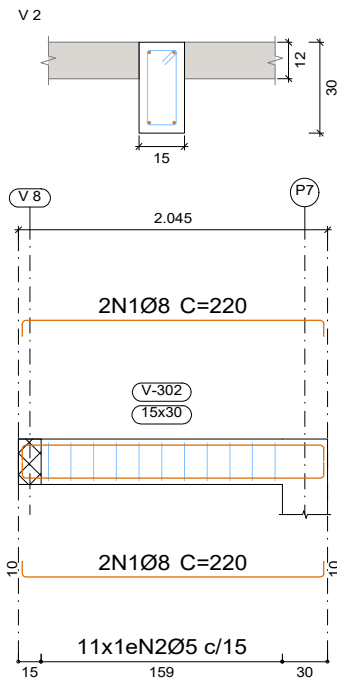


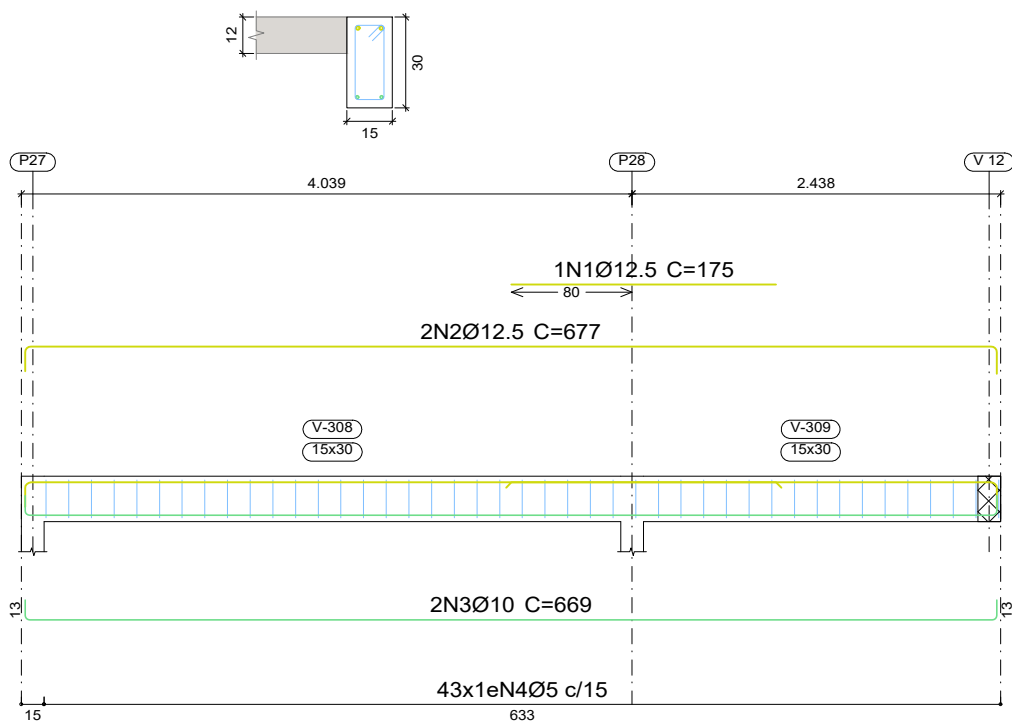
V 1
V 3
V 4
V 5



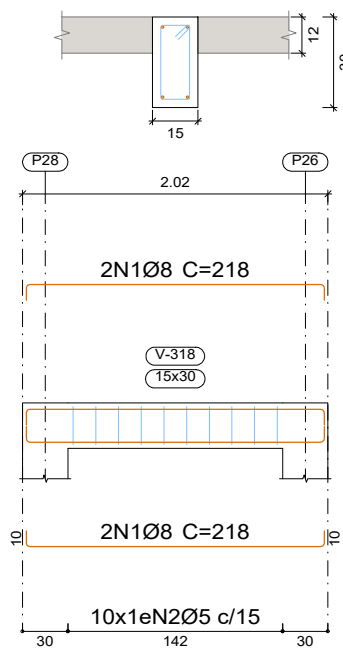
TOPO DA CALHA
Desenho de vigas
Concreto: C30, em geral
Aço das barras: CA-50 e CA-60
Aço dos estribos: CA-50 e CA-60
Escala vigas 1:50
Escala seções 1:25
Escala aberturas 1:25



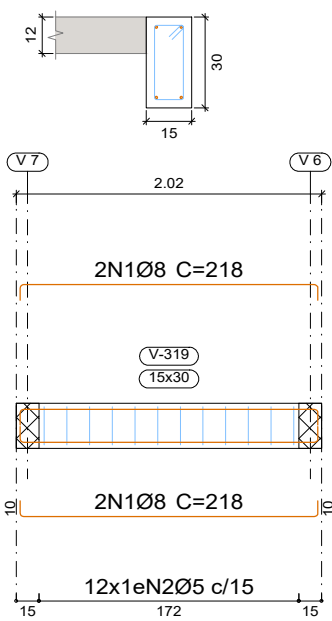
V 7



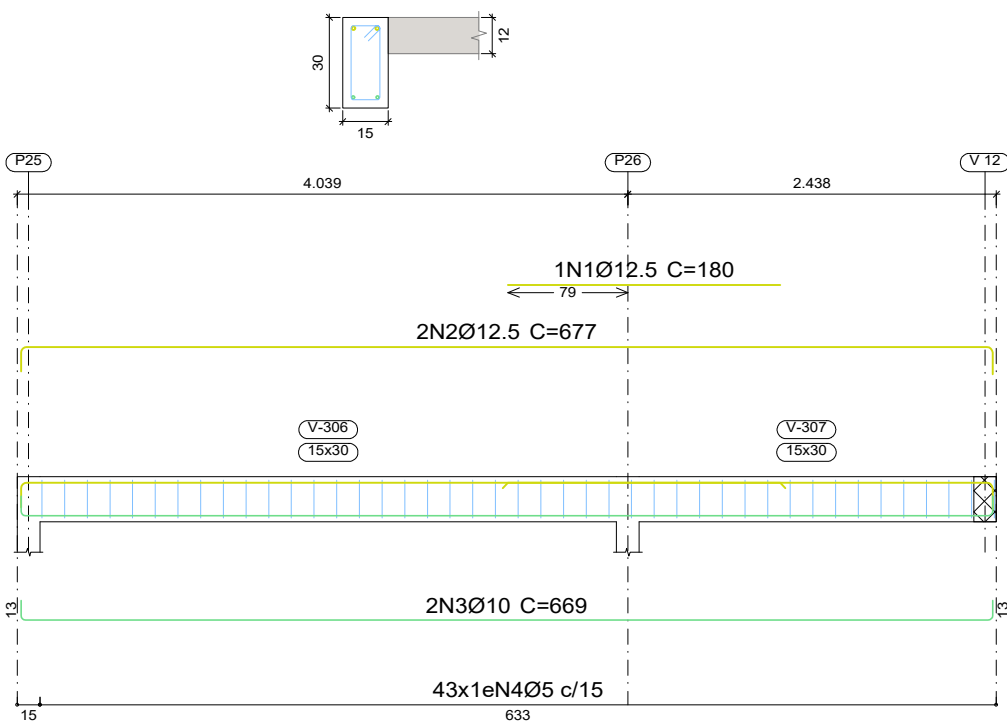
V 11



V 12

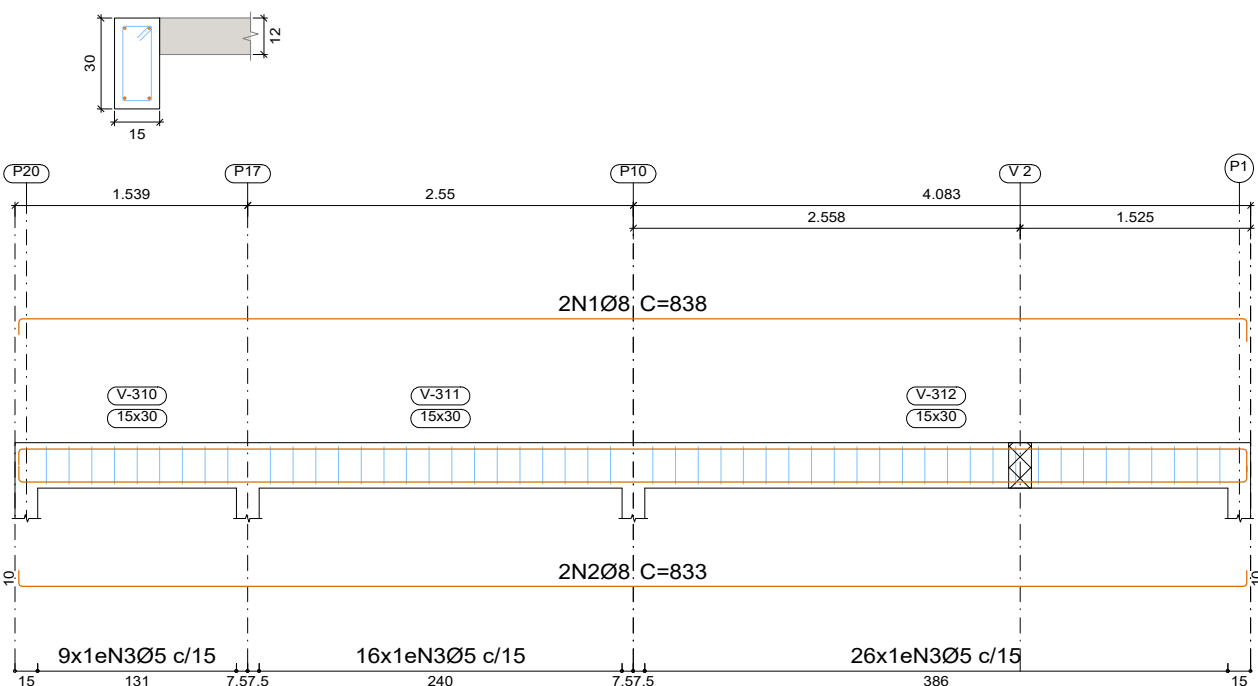


V 6

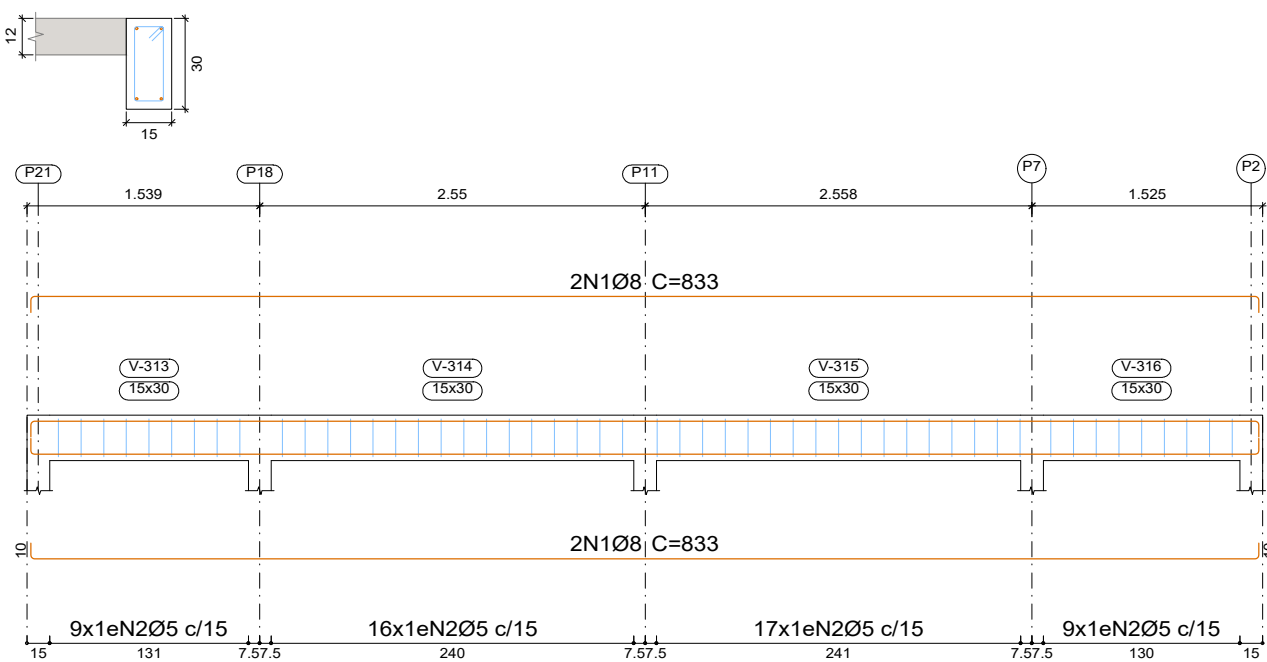


Resumo Aço Desenho de vigas		Comp. total (m)	Peso+10% (kg)	Total
CA-50	Ø8	136.9	59	109
	Ø10	26.8	18	
	Ø12.5	30.6	32	
CA-60	Ø5	207.5	36	36
Total				145

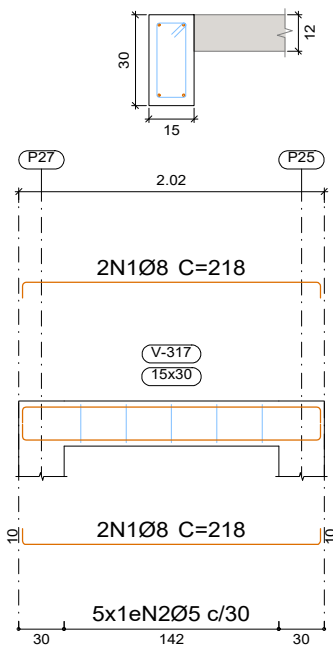
V 8



V 9



V 10



Elemento	Pos.	Diam.	Q.	Esquema (cm)	Comp. (cm)	Total (cm)	CA-50 (kg)	CA-60 (kg)
V 1=V 3=V 4=V 5	1	Ø8	4		220	880	3.5	
	2	Ø5	10		78	780		1.2
	Total+10%: (x4):						15.6	1.3
V 2	1	Ø8	4		220	880	3.5	
	2	Ø5	11		78	858		1.3
	Total+10%:						3.9	1.4
V 6	1	Ø12.5	1		180	180	1.7	
	2	Ø12.5	2		677	1354	13.0	
	3	Ø10	2		669	1338	8.2	
	4	Ø5	43		78	3354		5.3
V 7	1	Ø12.5	1		175	175	1.7	
	2	Ø12.5	2		677	1354	13.0	
	3	Ø10	2		669	1338	8.2	
	4	Ø5	43		78	3354		5.3
V 11	1	Ø8	4		218	872	3.4	
	2	Ø5	10		78	780		1.2
	Total+10%:						3.7	1.3
V 8	1	Ø8	2		838	1676	6.6	
	2	Ø8	2		833	1666	6.6	
	3	Ø5	51		78	3978		6.2
V 10	1	Ø8	4		218	872	3.4	
	2	Ø5	5		78	390		0.6
	Total+10%:						3.7	0.7
V 12	1	Ø8	4		218	872	3.4	
	2	Ø5	12		78	936		1.5
V 9	1	Ø8	4		833	3332	13.2	
	2	Ø5	51		78	3978		6.2
Total+10%:						14.5	6.8	
						Ø5:	0.0	35.5
						Ø8:	59.6	0.0
						Ø10:	18.0	0.0
						Ø12.5:	32.4	0.0
						Total:	110.0	35.5

 SERGIPE GOVERNO DO ESTADO		DIRETORIA DE ARQUITETURA E EDIFICAÇÕES PRAÇA TOBIAS BARRETO, nº 20, BAIRRO SÃO JOSÉ CEP: 49050-220 ARACAJU/SE TELS: (79)3216-5454 / (79)98851-9337	
TIPO: PROJETO DE ESTRUTURA EM CONCRETO ARMADO		Nº DA PRANCHA	
ASSUNTO: DETALHAMENTO DE VIGAS - TOPO DA CALHA		11/12	
END.: Centro Administrativo Governador Augusto Franco – Capucho BLOCO 04			
AUTOR DO PROJETO: JOSÉ VITOR DE JESUS COSTA			
RESPONSÁVEL TÉCNICO: JOSÉ VITOR DE JESUS COSTA		CREA: 2719438219SE	
ESCALA: 1/50	DATA: 07/2025	DESENHISTA: JOSÉ VITOR DE JESUS COSTA	